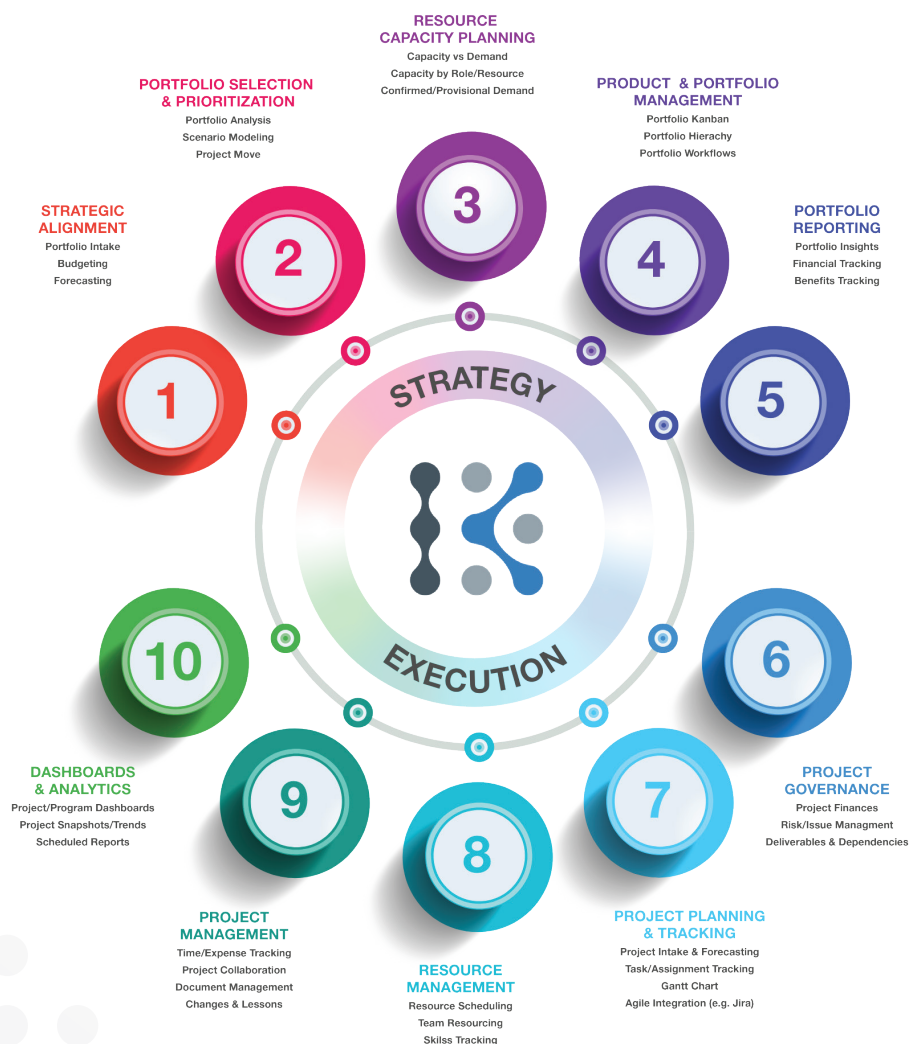


# Keyedin Enterprise

## Complete End-to-End Project Portfolio Management

By combining top-down portfolio decision-making with bottom-up project execution, Keyedin Enterprise (KIE) manages the entire project portfolio lifecycle, enabling your organization to place the right bets on the most valuable investments, turn quickly to respond to market and competitive changes, and deliver faster than ever before.



By automating the selection and prioritization of the most valuable portfolio projects, as well as the delivery and execution of those projects, Keyedin Enterprise enables the PMO to:



Lower the cost and time associated with project delivery



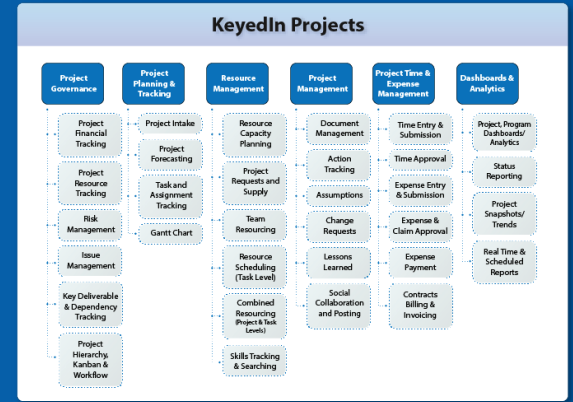
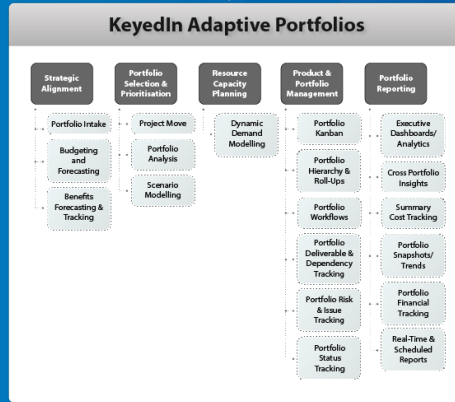
Assess changes in the market and adjust portfolio investments in days instead of months



Strengthen the credibility of the PMO in the eyes of executive leadership

# KeyedIn Enterprise

Together with KeyedIn Adaptive Portfolios and KeyedIn Projects, KeyedIn Enterprise is part of a suite of cloud solutions designed to support PMOs and ePMOs, business transformation initiatives and strategy realization efforts.



## Technology Partners

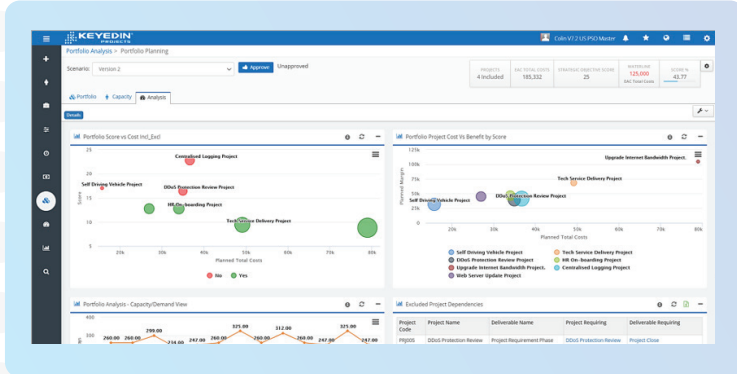


## Product Integrations

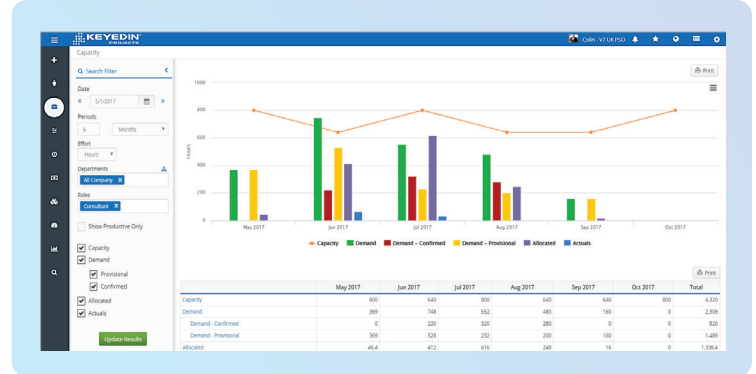


## How It Works

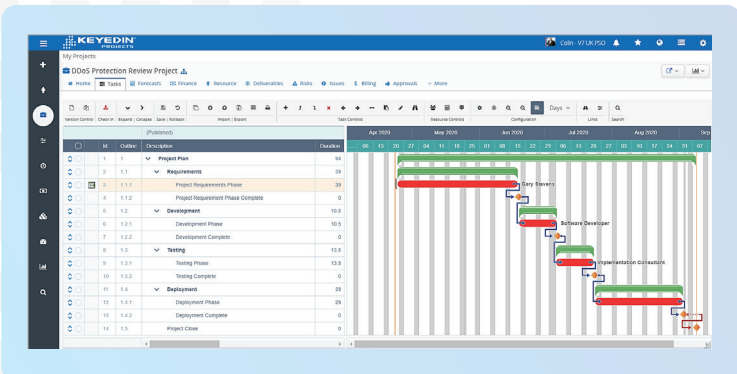
The unique combination of strategic planning and project execution within KeyedIn Enterprise enables your PMO or ePMO to ensure the work being completed across the organization is aligned with company strategy. The comprehensive feature set in KIE spans top-down portfolio planning and bottom-up project management.



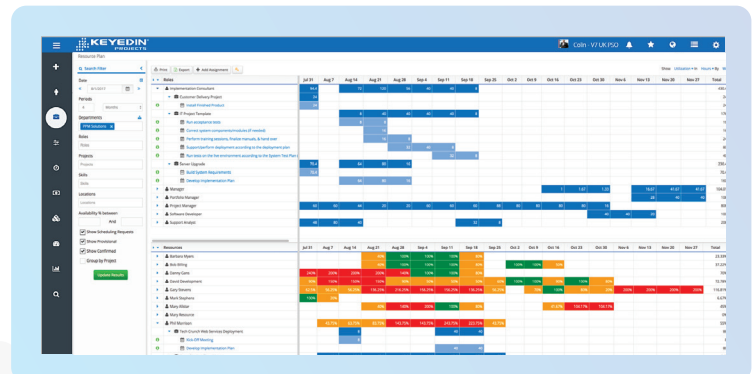
PORTFOLIO ANALYSIS



CAPACITY PLANNING



GANTT CHART



RESOURCE MANAGEMENT